

## NOTES ON MAKING YOUR CHAIRS

- You can download the PDF, Adobe Illustrator files, ShopBot files, and CNC Router Files at:

<http://honorbeforevictory.com/gothic-wooden-breakdown-camp-chair-version-2/>

- Note that we consider this chair an “SCA camp” design, and you will see it in many camps. It is evocative of high-back gothic chairs, but is considerably simpler than those found in period. We continue to use it because it breaks down flat and is quite comfortable. The original plans for this chair came from <http://www.greydragon.org/furniture/chairs/>, but we modified them to be a little lighter and shorter (which is represented in our plans and files).

- In our experience, the tabs are a bit fragile and can break off if dropped on them. This doesn't usually render the chair unusable, as there are so many tabs, but it does make for a less-than-ideal appearance—so treat your chairs with care.

---

## About the Authors, Contact Details, and Copyright Notice



Lord Gregor Reinhardt von Holstein and Baroness Genoveva von Lübeck reside in the Barony of Cynnabar within the Kingdom of the Middle. We enjoy helping anyone interested in getting the most out of their SCA experience. You can e-mail us at [gregor.von.holstein@gmail.com](mailto:gregor.von.holstein@gmail.com) and at [genoveva.von.lubeck@gmail.com](mailto:genoveva.von.lubeck@gmail.com).



Please visit our web site at <http://honorbeforevictory.com> where you'll find tutorials, projects, photos, articles, and information!

This publication is protected under the US Copyright Act of 1976 and all other applicable international, federal, state and local laws, and all rights are reserved. You may use the pattern we developed to create chairs, and you are free to sell the chairs you make, but please do not sell the pattern itself. When in doubt, please e-mail us.

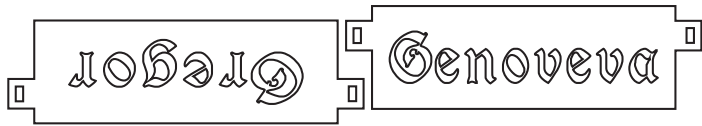
# Breakdown Gothic Camp Chair

by Gregor and Genoveva

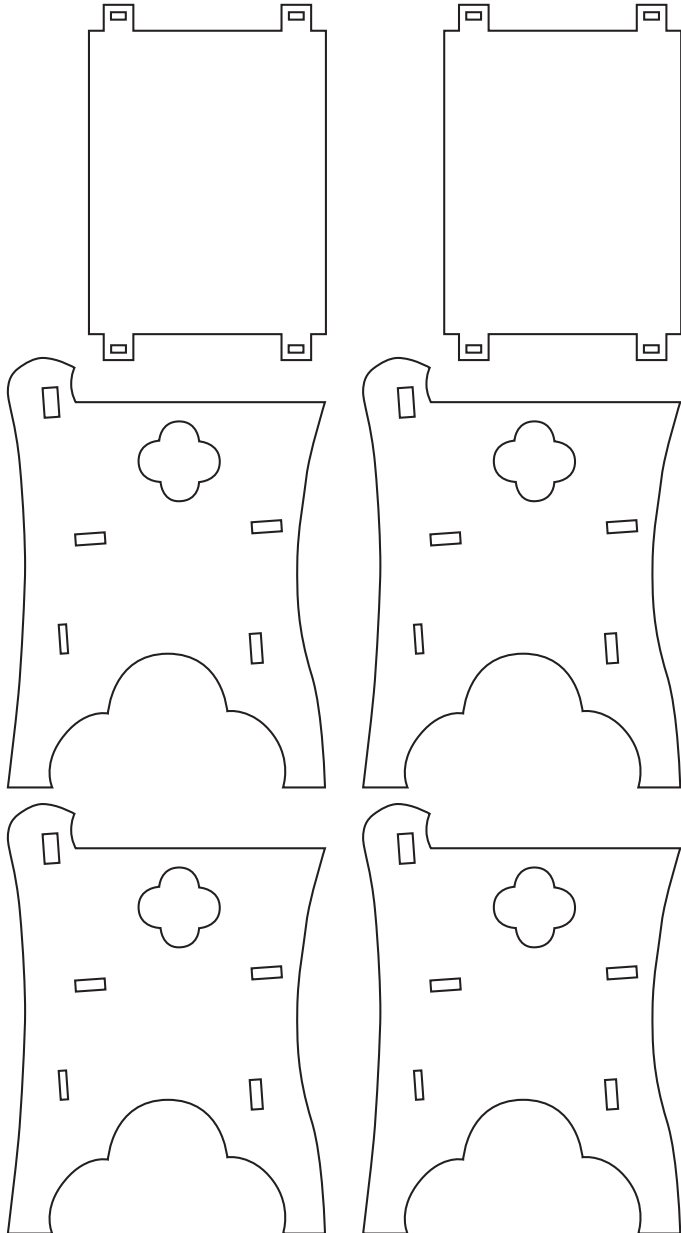
Wood camp chairs are one of the first improvements many folks make, as it makes a huge difference in the look and feel of their camp. Our chairs are made of sturdy plywood and break down completely flat. The wood can be cut by hand or with a jigsaw hand tool (which we did for our first two chairs), but can also be cut on a CNC Router ShopBot so everything is precise — this is one of our favorite aspects of this chair. We are happy to share the files we created for the Shopbot - you will find the links to them on the back of this handout.



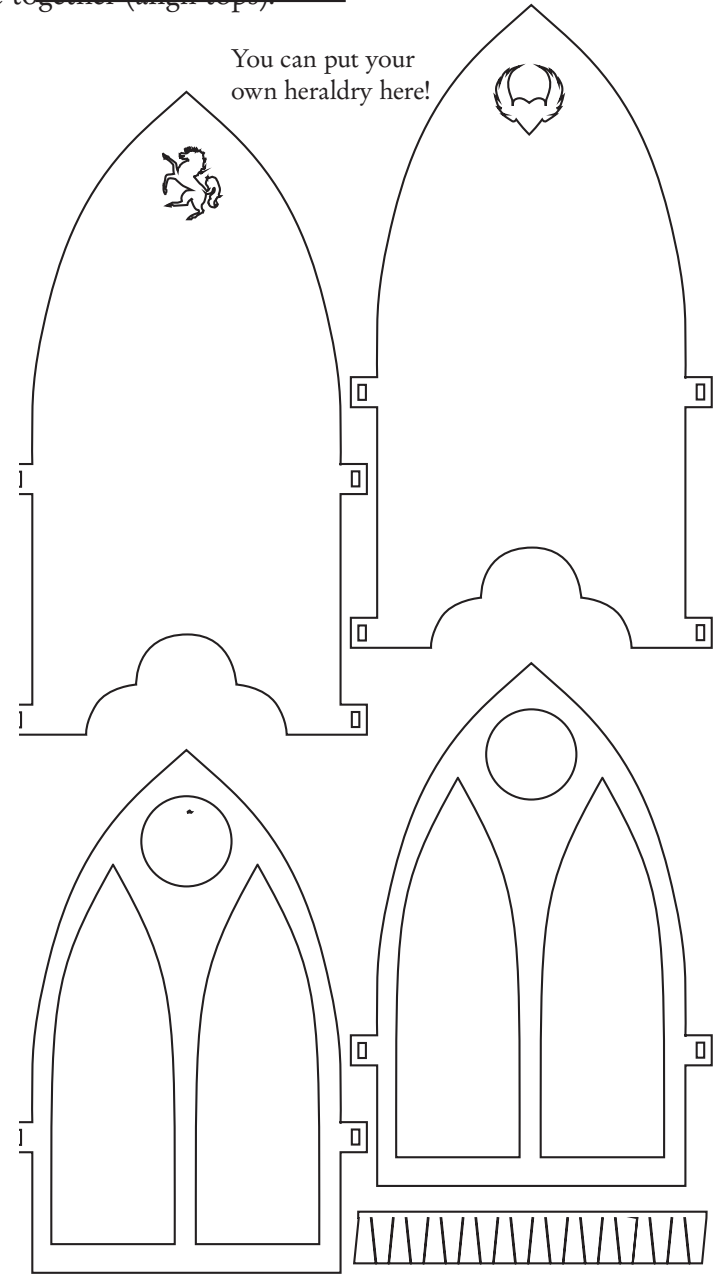
Cut these pieces from one 4'x8' sheet of 3/4" thick plywood



You can put your own names here!



Cut these pieces from one 4'x8' sheet of 1/2" thick plywood then glue together (align tops).



You can put your own heraldry here!

These are the pegs for the chairs.